

# THE LABOR DAY REGATTA

September 7, 2009

*The Rudder Club of Jacksonville*

8533 Malaga Avenue

Orange Park, FL 32073, USA

## PHRF CLASSES

### SAILING INSTRUCTIONS

#### 1 RULES

- 1.1 The regatta will be governed by the rules as defined in the current *Racing Rules of Sailing* (RRS), and the rules of the First Coast Sailing Association.
- 1.2 US SAILING Prescriptions will apply.
- 1.3 The Regatta is designated Category A.
- 1.4 Racing Rules A4 and A5 are changed by SI 10.4 as follows: "A boat starting later than five minutes after her starting signal will be scored "Did Not Start" without hearing."
- 1.5 Racing rules 35 and A4.1 of the RRS are changed by SI 13 as follows: "A boat failing to finish within 45 minutes (corrected time where applicable) after the first boat in her class will be scored 'Did not Finish' without a hearing".

#### 2 NOTICES TO COMPETITORS

Official notices to competitors will be posted on the official notice board located on the north exterior wall of the Rudder Club. Notices may also be published on the Rudder Club Web Site at [www.rudderclub.com](http://www.rudderclub.com)

#### 3 CHANGES IN THE SAILING INSTRUCTIONS

Changes to the Sailing Instructions will be distributed by e-mail to those on-line entrants with an e-mail address provided on the registration form; posted on the [Rudder Club web site](#); and posted on the official bulletin board on the north exterior wall of the Rudder Club prior to 1000 on the morning of each race. Subsequent changes will be made in the form of a Notice to Competitors.

#### 4 SIGNALS MADE ASHORE

- 4.1 Signals made ashore will be displayed from the flag pole located on the north side of the Rudder Club.
- 4.2 Code Flag "AP", Answering Pennant, displayed ashore with two sound signals (one when lowered) means "The race is postponed" The warning signal will be made not less than 45 minutes after "AP" is lowered.
- 4.3 Signals made ashore will also be relayed on Marine VHF Channel 71

#### 5 SCHEDULE OF RACES

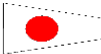

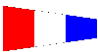
- 5.1 One race is scheduled.

#### 5.2 Schedule:

**MONDAY 7 September 2009** - PHRF Classes,  
PHRF Late Registration: 1000 - 1130  
Competitor's Meeting: 1200 (Optional for those registering on line.)  
Warning signal: 1255.

## 6 CLASS FLAGS

Class flags will be the International Numeral Pennants as depicted in the RRS

Class	Pennant	
PHRF Spinnaker	P1	
PHRF Non-spinnaker	P2	
PHRF Cruiser	P3	

## 7 RACING AREA

The racing area will be in the St. Johns River between the Buckman Bridge to the south and the Fuller Warren Bridge to the north as depicted on NOAA Chart 11492.

## 8 THE COURSE

- 8.1 Race course for PHRF Classes will be displayed from a course board on the committee boat.
- 8.2 If the Race Committee sets an offset mark in the vicinity of the windward mark, boats shall sail around both marks leaving them on the prescribed side.

## 9 MARKS

- 9.1 Marks may be government navigation marks as depicted on NOAA Chart 11492 (as corrected by Notices to Mariners), FCSA Race Marks or inflatable marks. Government marks will be designated by their number as appearing on the chart. FCSA marks will be designated by their Alphabetic designator. An orange sphere set to windward of the starting line as a windward mark will be designated "W", WHISKEY. Approximate positions are shown in Appendix A.
- 9.2 A limiting mark may be set to protect the committee boat close to her and on the same end of the starting line. No yacht shall pass between the limiting mark and the committee boat. (This limiting mark is not a mark of the course.)

## 10 START

- 10.1 The starting line will be positioned in an area bounded by the Buckman Bridge and latitude line North 30°13.3'.
- 10.2 The Starting Line will be a line between an orange flag flown on the Race Committee/Signal Boat and a mark set toward the left side of the course from the Committee Boat.
- 10.3 Boats whose warning signal has not been made shall remain clear of the starting area.
- 10.4 A boat starting later than five minutes after her starting signal will be scored "Did Not Start" without hearing. This changes Rules A4 and A5.

## 11 CHANGE OF COURSE AFTER THE START

To change the position of the next mark, the race committee will move the original mark (or the

finishing line) to a new position. The change will be signaled before the leading boat has begun the leg, although the mark may not yet be in the new position. Any mark to be rounded after rounding the moved mark may be relocated without further signaling to maintain the course configuration.

## **12 THE FINISH**

The Finish Line will be between an orange flag flown on the Race Committee/Signal Boat/Rudder Club Dock and a mark set perpendicular to the course from the orange flag relative to the final leg of the course. A finish from the Rudder Club dock will be indicated as "RC" on the course board.

## **13 TIME LIMIT**

The time limit shall be 3 hours for each class. Yachts failing to finish within 45 minutes corrected time after the first yacht of their class finishes will be scored "Did not Finish." This changes rule 35 and rule A41.

## **14 PROTESTS AND REQUESTS FOR REDRESS**

- 14.1 Protests shall be written on forms available at the Rudder Club. They shall be filed with the Regatta Chairman. Protest time will end 90 minutes after the last boat has finished the last race of the day. Protests will be heard in the approximate order received.
- 14.2 Protest notices will be posted on the Official Bulletin Board within 30 minutes following the protest time limit.

## **15 SAFETY**

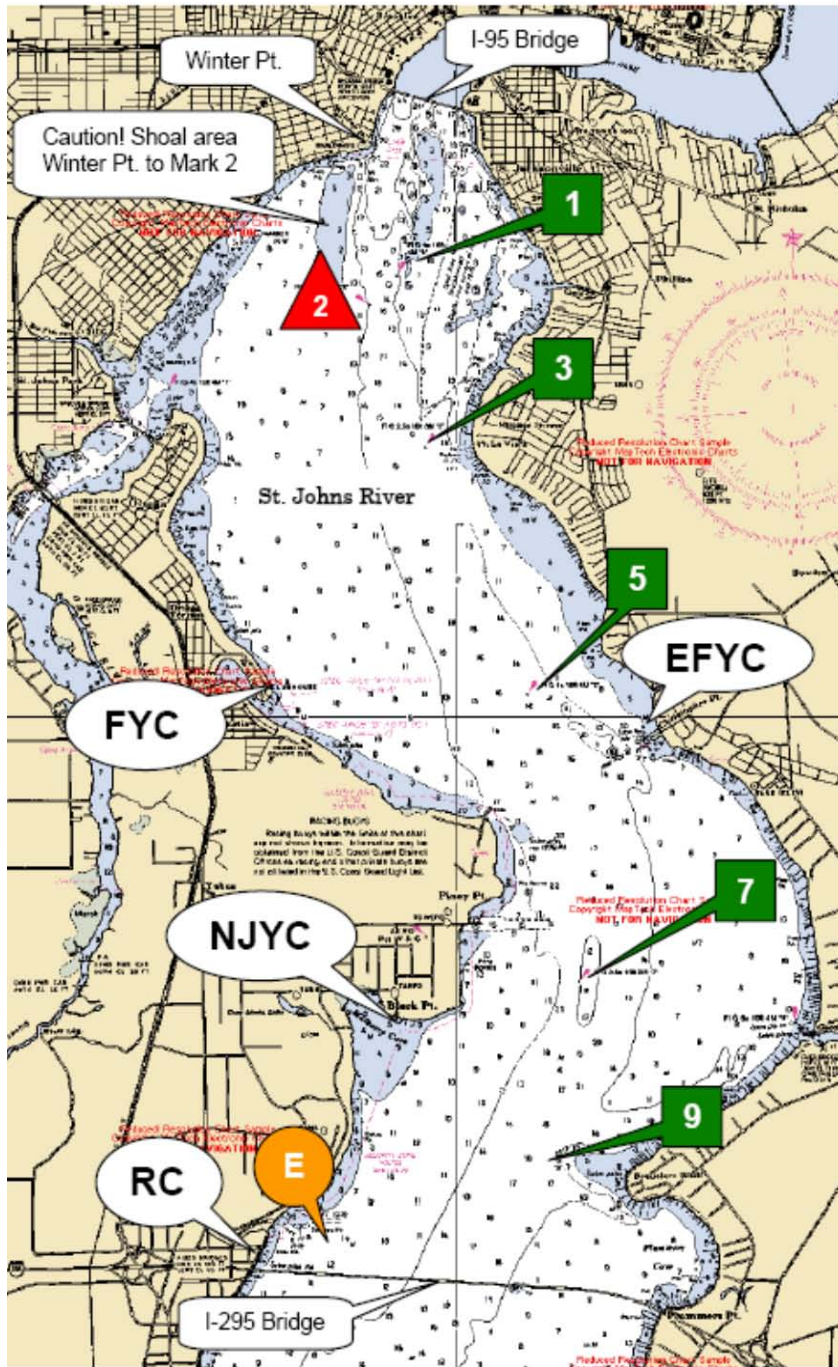
- 15.1 The Race Committee boat and Race Support boats will maintain a listening watch on Marine VHF Channel 71.
- 15.2 Boats shall attempt to check in with the Race Committee by sailing past on the non- course side prior to their class Warning Signal.
- 15.3 Boats withdrawing from a race prior to finishing shall make every effort to ensure that Race Committee is notified that they have dropped out
- 15.4 All competitors are required to conform to the U.S. Coast Guard regulations and the RRS concerning personal floatation devices and other required equipment.
- 15.5 Yachts shall not impede the passage of a vessel which can safely navigate only within a narrow channel, and give way to commercial fishing vessels while fishing or vessels with restricted ability to maneuver.

## **16 SCORING**

- 16.1 PHRF Classes will be scored using PHRF Time on Distance
- 16.2 One race must be completed to constitute a series.

## **17 PRIZES**

Results will be announced at the Rudder Club following the race. First, second, and third place prizes will be awarded in classes of more than five finishing yachts. First and second place prizes will be awarded in classes of four to five finishing yachts. A first place prize will be awarded in classes of three or less finishing yachts.



Race Marks  
GPS Position

<b>1</b>	N30° 17.798'	W81° 40.440'
<b>3</b>	N30° 16.723'	W81° 40.219'
<b>5</b>	N30° 15.013'	W81° 39.470'
<b>7</b>	N30° 13.312'	W81° 39.078'
<b>9</b>	N30° 12.272'	W81° 39.241'
<b>E</b>	N30° 11.700'	W81° 40.900'

Range and Bearing between I

From	To	Range n.m.	Beari Mag.
E	7	2.3	048°
E	9	1.5	073°
1	3	1.1	175°
1	5	2.8	168°
3	1	1.1	355°
3	5	1.7	163°
3	7	3.7	169°
5	1	2.8	348°
5	3	1.7	343°
5	7	1.9	175°
5	9	2.9	181°
7	E	2.3	229°
7	1	4.6	350°
7	3	3.6	349°
7	5	1.9	355°
7	9	1.1	193°
9	E	1.5	253°
9	5	2.9	001°
9	7	1.1	013°